



Water

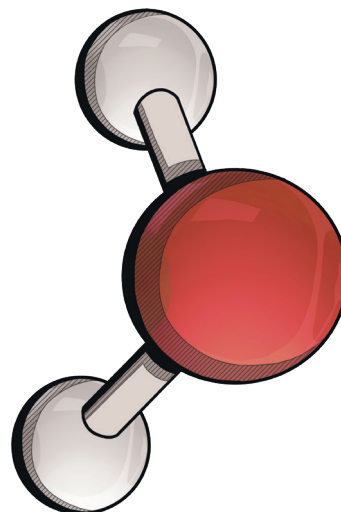
Type of molecule: small molecule

Bonding: covalent

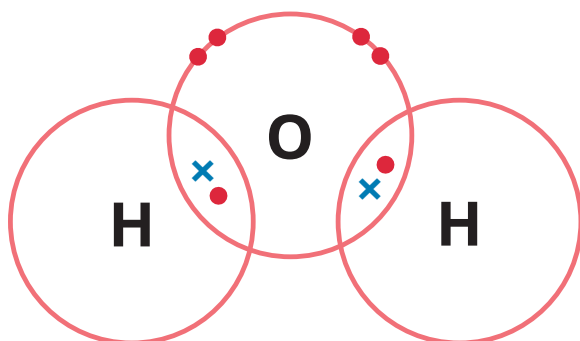
Formula: H_2O

Ball and stick model:

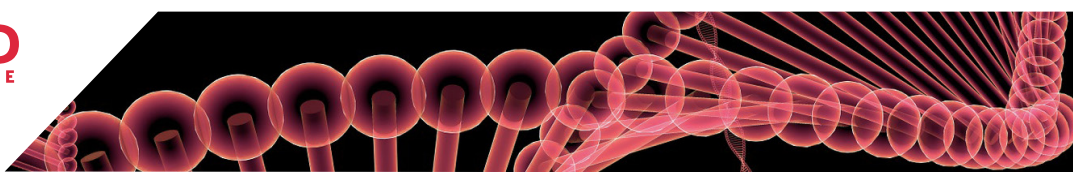
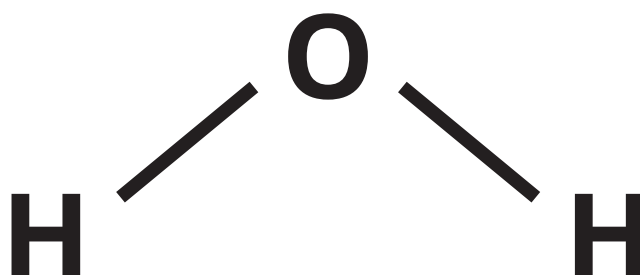
	white	hydrogen
	red	oxygen



Dot and cross diagrams:



Displayed formula:





Ammonia

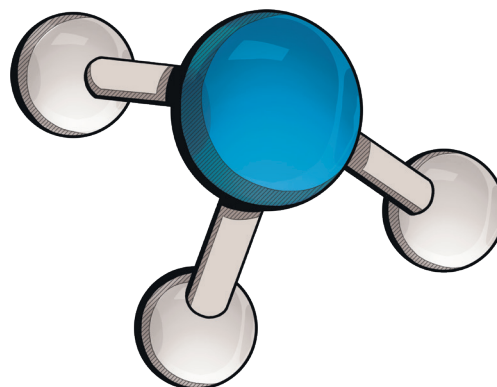
Type of molecule: small molecule

Bonding: covalent

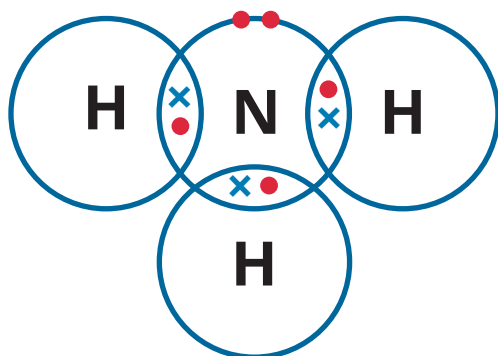
Formula: NH_3

Ball and stick model:

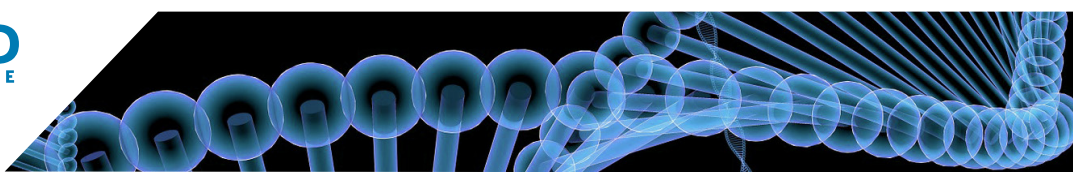
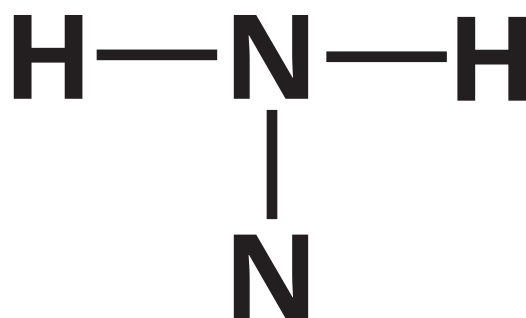
	white	hydrogen
	blue	nitrogen



Dot and cross diagrams:



Displayed formula:



Oxygen

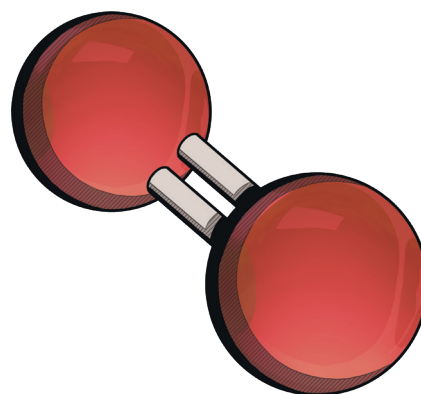
Type of molecule: small molecule

Bonding: covalent

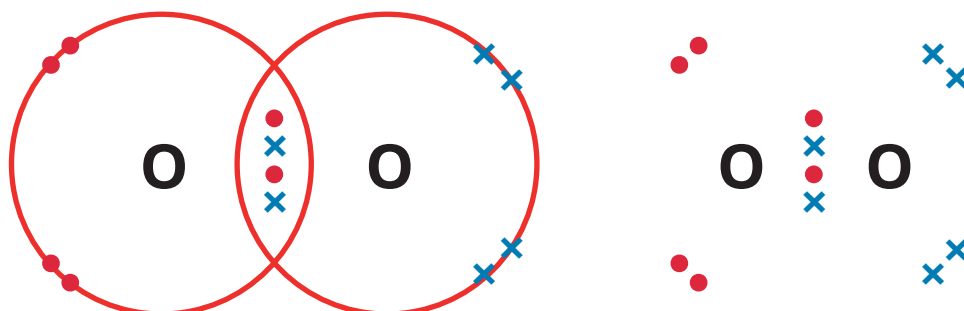
Formula: O₂

Ball and stick model:

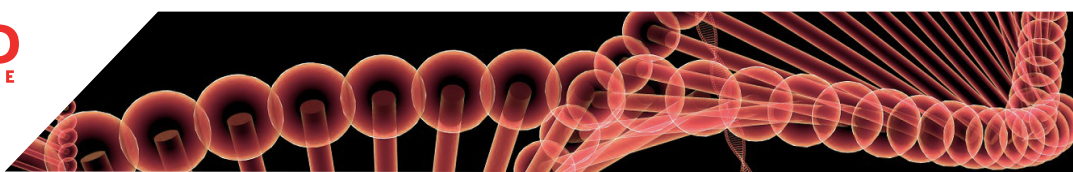
	red	oxygen
--	-----	--------



Dot and cross diagrams:



Displayed formula:




Nitrogen

Type of molecule: small molecule

Bonding: covalent

Formula: N_2

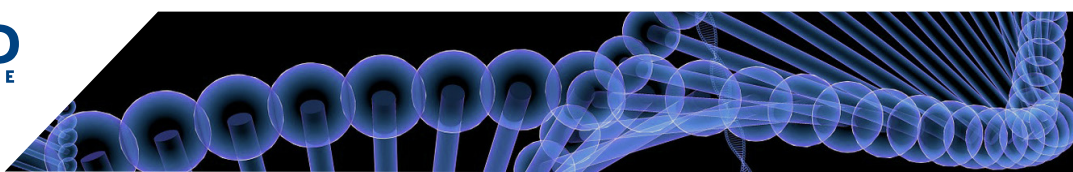
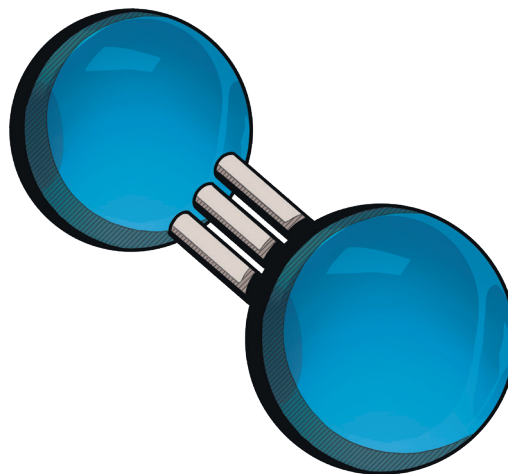
Ball and stick model:

	blue	nitrogen
--	------	----------

Dot and cross diagrams:



Displayed formula:



Hydrogen

Type of molecule: small molecule

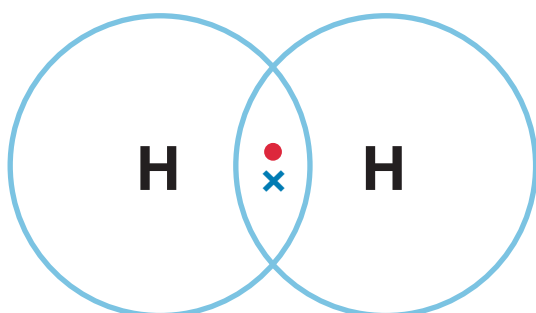
Bonding: covalent

Formula: H₂

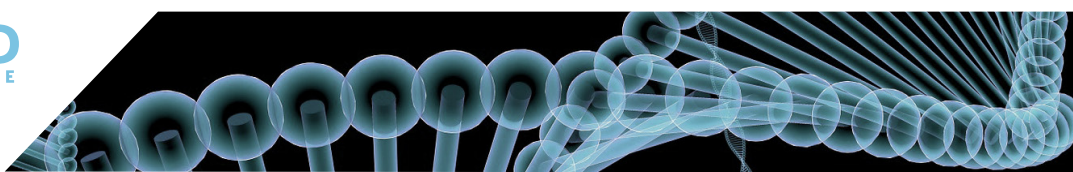
Ball and stick model:

<input type="text"/>	white	hydrogen
----------------------	-------	----------

Dot and cross diagrams:



Displayed formula:



Chlorine

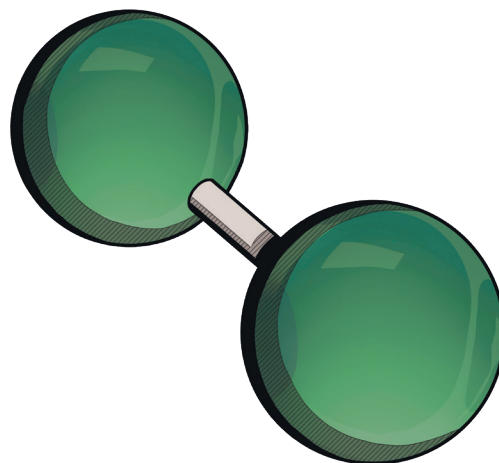
Type of molecule: small molecule

Bonding: covalent

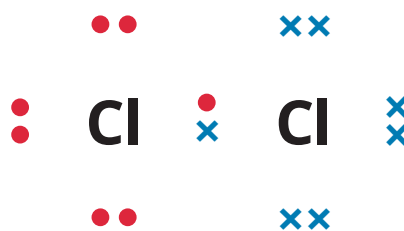
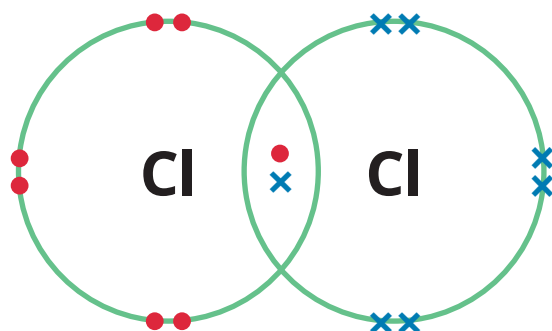
Formula: Cl₂

Ball and stick model:

	green	chlorine
--	-------	----------



Dot and cross diagrams:



Displayed formula:





Hydrogen Chloride

Type of molecule: small molecule

Bonding: covalent

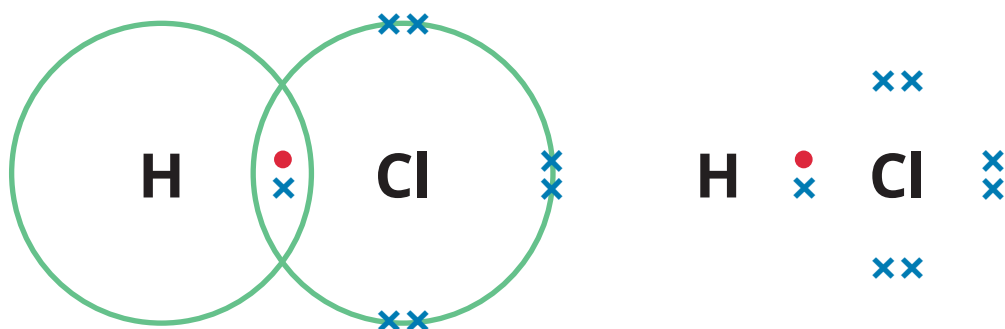
Formula: HCl

Ball and stick model:

	white	hydrogen
	green	chlorine



Dot and cross diagrams:



Displayed formula:



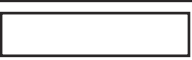

Methane

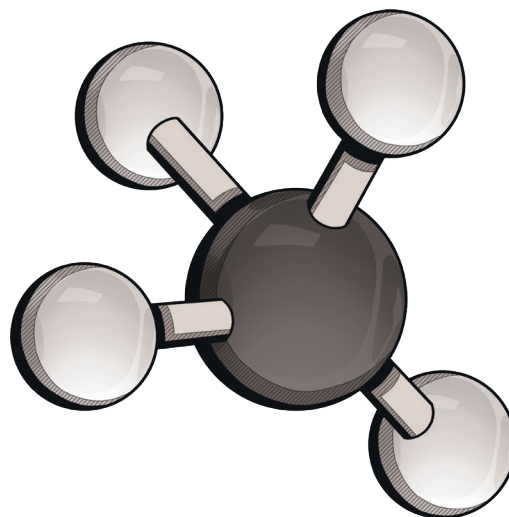
Type of molecule: small molecule

Bonding: covalent

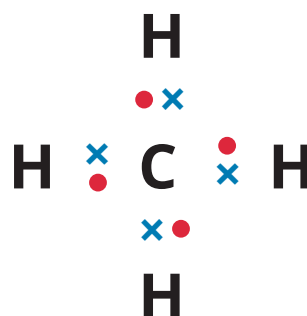
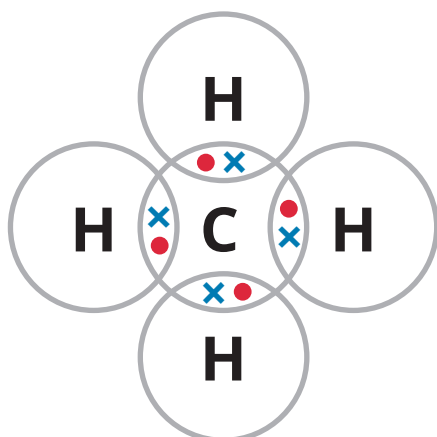
Formula: CH₄

Ball and stick model:

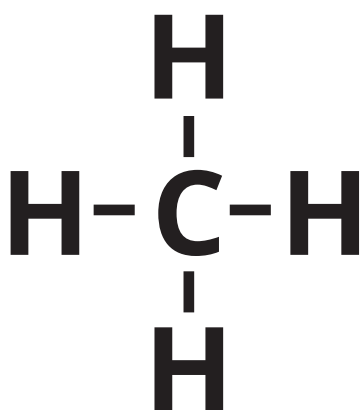
	white	hydrogen
	black	carbon



Dot and cross diagrams:



Displayed formula:





Sodium Chloride

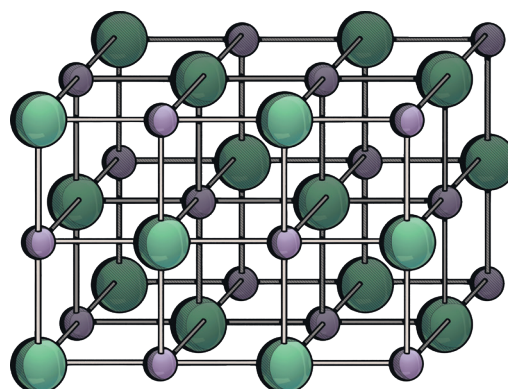
Type of molecule: giant lattice

Bonding: ionic

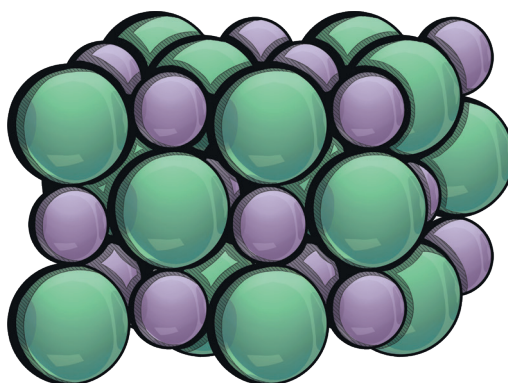
Formula: NaCl

Ball and stick model:

	green	chlorine
	violet	sodium



3D model:



Dot and cross diagrams:

