

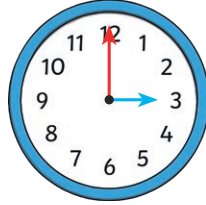
Digital and Analogue Clocks

Match the different ways of representing the same time.

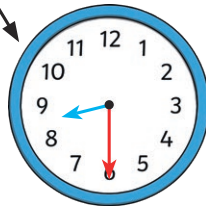
Half past eight



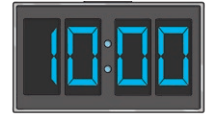
Half past one



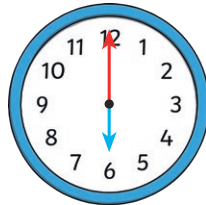
Three o'clock



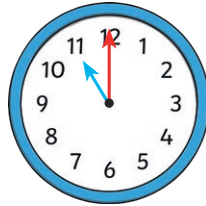
Eleven o'clock



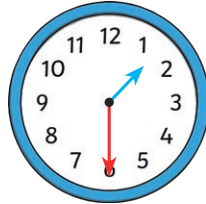
Half past two



Half past four



Ten o'clock



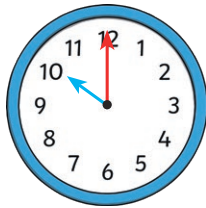
Six o'clock



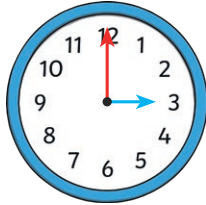
Digital and Analogue Clocks Answers

Match the different ways of representing the same time.

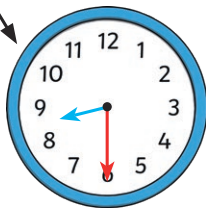
Half past eight



Half past one



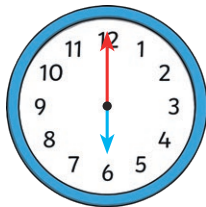
Three o'clock



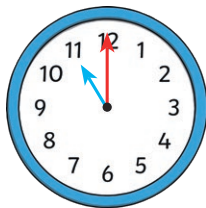
Eleven o'clock



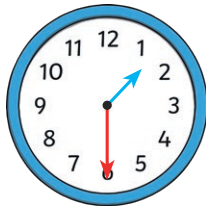
Half past two



Half past four



Ten o'clock



Six o'clock

