

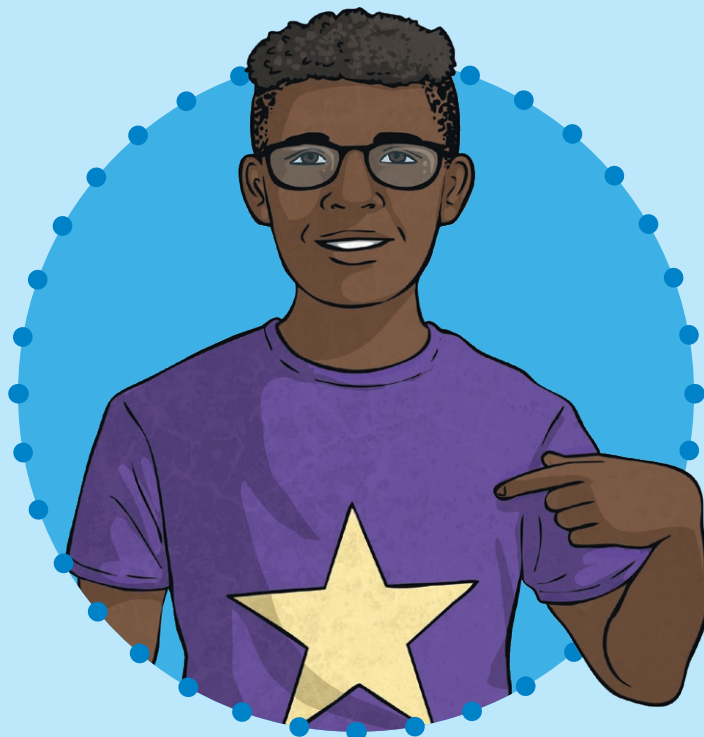
Subject Pronoun: I
I like chocolate.

.....
Possessive Adjective: My
That's my pen.

.....
Possessive Pronoun: Mine
Those pens are mine.

.....
Object Pronoun: Me
You help me everyday.

We use 'I' when talking about ourselves.



Subject Pronoun: **You**
You like chocolate.

.....
Possessive Adjective: **Your**
That's your pen.

.....
Possessive Pronoun: **Yours**
That pen is yours.

.....
Object Pronoun: **You**
I like helping you.

We use 'you' when we're talking about the person we are talking to. 'You' can be singular or plural, formal or informal.



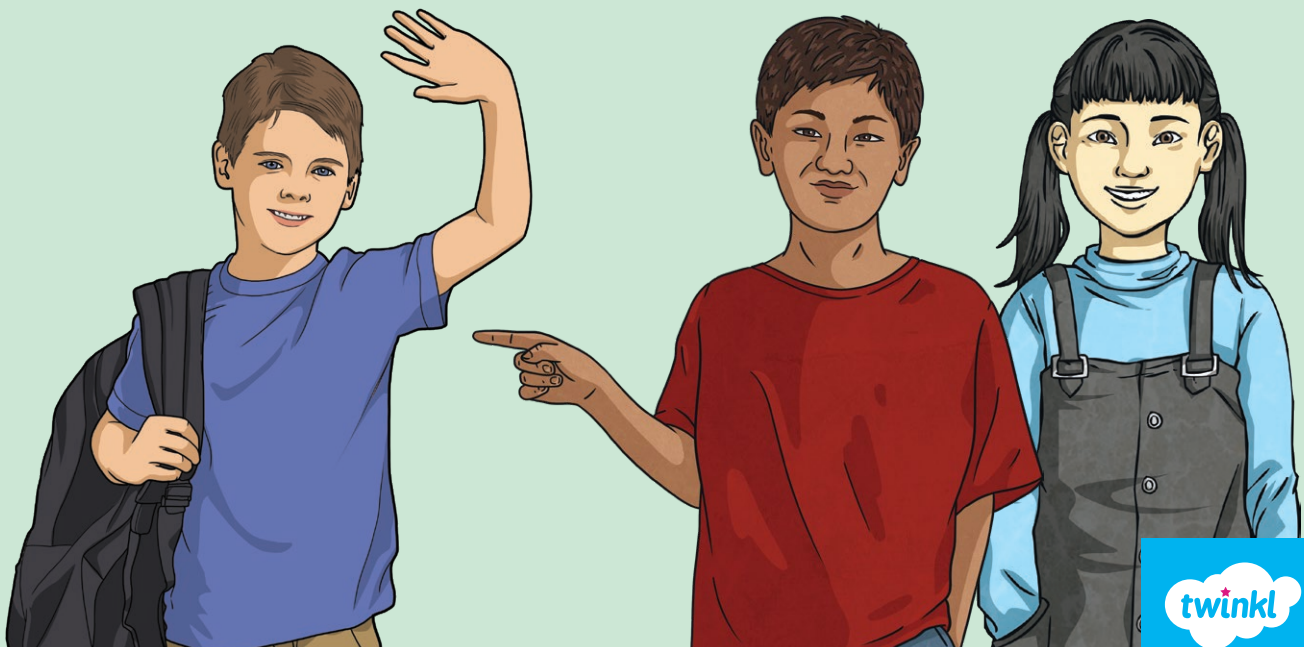
Subject Pronoun: He
He likes chocolate.

.....
Possessive Adjective: His
That's his pen.

.....
Possessive Pronoun: His
That pen is his.

.....
Object Pronoun: Him
I like helping him.

We use 'he' when we talk about a person who identifies as male. 'He' is always singular.



Subject Pronoun: **She**
She likes chocolate.

.....

Possessive Adjective: **Her**
That's her pen.

.....

Possessive Pronoun: **Hers**
That pen is hers.

.....

Object Pronoun: **Her**
I like helping her.

We use 'she' when we talk about a person who identifies as female. 'She' is always singular.



Subject Pronoun: **They**
They like chocolate.

Possessive Adjective: **Their**
That's their pen.

Possessive Pronoun: **Theirs**
That pen is theirs.

Object Pronoun: **Them**
I like helping **them**.

We use 'they' to talk about a group of people. We use 'they' to talk about a group of objects. We use 'they' when we don't know someone's gender. 'They' can also be someone's chosen pronoun.



Subject Pronoun: **We**
They like chocolate.

.....

Possessive Adjective: **Our**
That's our pen.

.....

Possessive Pronoun: **Ours**
That pen is ours.

.....

Object Pronoun: **Us**
They help us everyday.

We use 'we' to talk about a group of people that includes us.



Subject Pronoun: It

It is a pen.

.....

Possessive Adjective: It's

Look at that house.

It's garden is beautiful.

.....

Object Pronoun: It

I like it.

We use 'it' to talk about singular objects.

