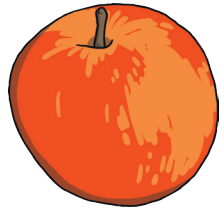
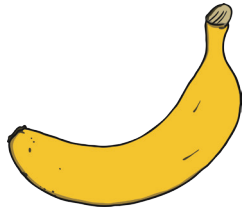


Fruit

shuǐ guǒ 水果



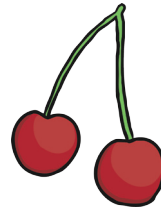
apple
píng guǒ
苹果



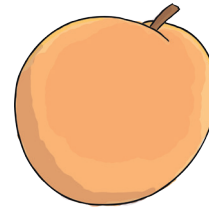
banana
xiāng jiāo
香蕉



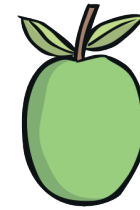
blueberry
lán méi
蓝莓



cherry
yīng táo
樱桃



peach
táo
桃



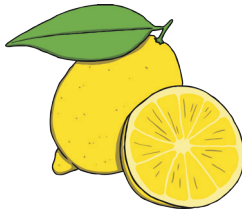
guava
fān shí liú
番石榴



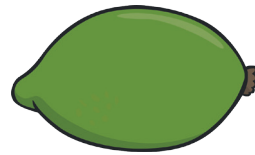
avocado
niú yóu guǒ
牛油果



grapes
pú táo
葡萄



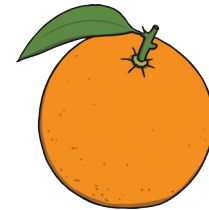
lemon
níng méng
柠檬



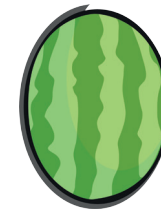
lime
qīng níng
青柠



mango
máng guǒ
芒果



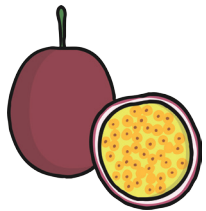
orange
jú zi
桔子



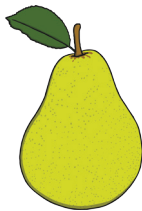
melon
guā
瓜



papaya
mù guā
木瓜



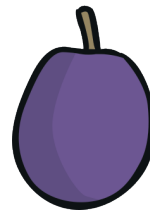
passion fruit
bǎi xiāng guǒ
百香果



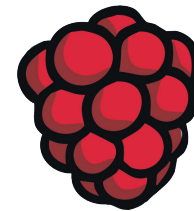
pear
lí
梨



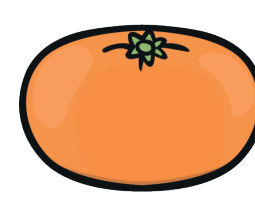
pineapple
bō luó
菠萝



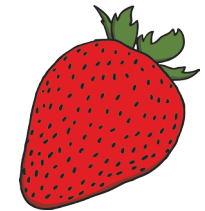
plum
lǐ zi
李子



raspberry
shù méi
树莓



satsuma
mì jú
蜜橘



strawberry
cǎo méi
草莓