

shān zì páng  
山字旁

山

dǎo

岛



fēng

峰



twinkl.com

shì zì páng  
示字旁

示

lǐ

礼



fú

福



twinkl.com

bìng zì páng  
病字旁

疒

bìng

病



pí

疲



twinkl.com

hé mù páng  
禾木旁

禾

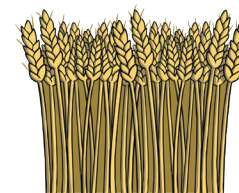
chēng

称



dào

稻



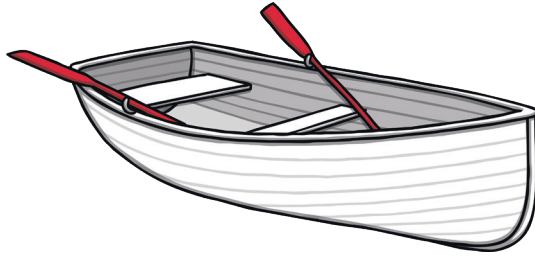
twinkl.com

zhōu zì páng  
舟字旁

舟

chuán  
船

tǐng  
艇



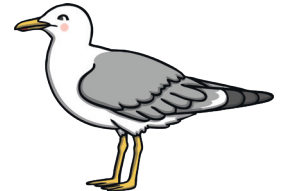
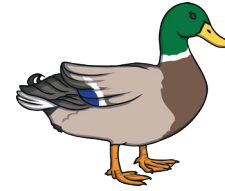
twinkl.com

niǎo zì páng  
鸟字旁

鸟

yā  
鸭

ōu  
鸥



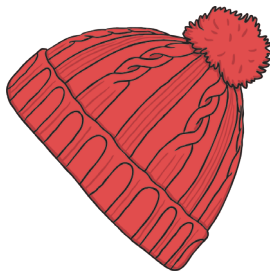
twinkl.com

jīn zì páng  
巾字旁

巾

mào  
帽

bù  
布



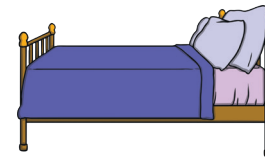
twinkl.com

guǎng zì páng  
广字旁

广

chuáng  
床

zuò  
座



twinkl.com

mǎ zì páng  
马字旁

马

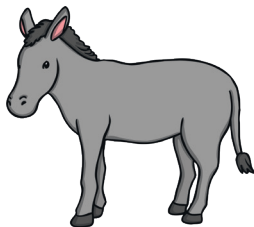
qí

骑



lú

驴



twinkl.com

yǔ zì tóu  
雨字头

雨

xuě

雪



léi

雷



twinkl.com

yī zì páng  
衣字旁

衣

chèn

衬



shān

衫

twinkl.com

fǎn wén páng  
反文旁

文

jiào

教



shǔ

数

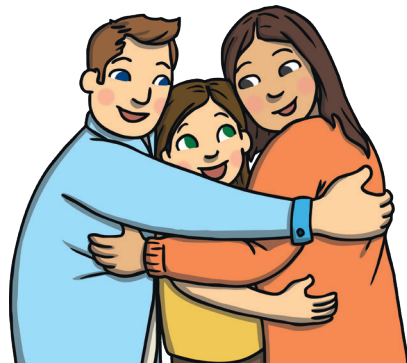


twinkl.com

guó zì kuāng  
国字框

口

tuán  
团



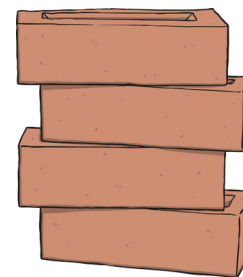
yuán  
圆

twinkl.com

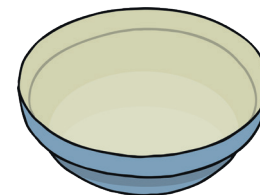
shí zì páng  
石字旁

石

zhuān  
砖



wǎn  
碗

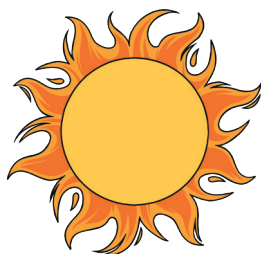


twinkl.com

shuāng ěr páng  
双耳旁

卩

yáng  
阳



yóu  
邮



twinkl.com

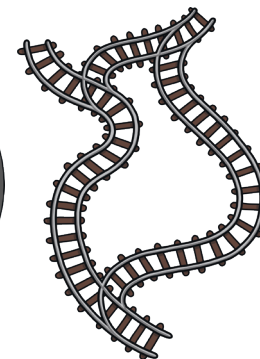
chē zì páng  
车字旁

车

lún  
轮



guǐ  
轨



twinkl.com